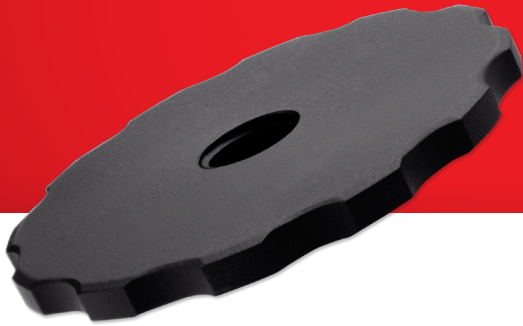


SORT LOCK – INSTALLATION INSTRUCTIONS



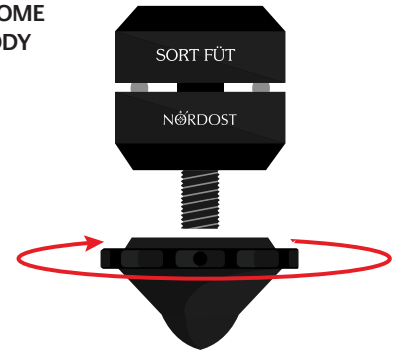
The Sort Lock is a locking wheel upgrade that allows you to fix the adjustments that you have made to your Sort Füt units. It should be fitted to the Sort Füt before installation. This is done by removing the adjustable finial dome and screwing the locking wheel onto the threaded post.

Note: There is a right way up for the Sort Lock. The raised shoulder around the central threaded hole (the “boss”) should face downwards (away from the body of the Sort Füt) with the Füt installed.

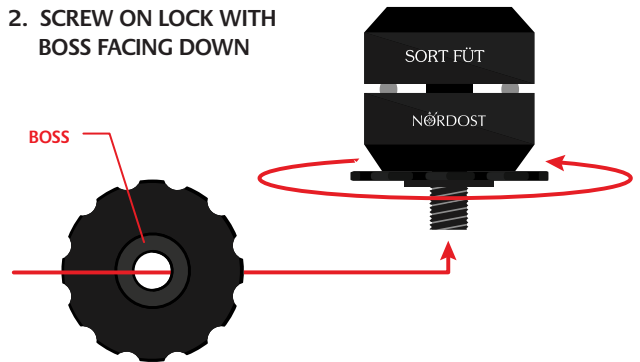
Once you have mounted the Sort Lock against the Sort Füt body, simply replace the finial dome. Using the Sort Lock will not reduce the available adjustment range of the Sort Füt. It will ensure that your speakers remain in the optimum position, while the increased rigidity of the coupling will also improve performance.

When positioning and leveling your speakers, follow the Sort Füt instructions as normal. Once you have the correct position and level adjustments, just wind the Sort Lock down the post until it locks the position of the finial dome. The best approach is to hold the position of the finial dome using the pry-bar adjustment tool and spin the locking wheel down the post until it is tight against the finial dome foot. The anodized surfaces of the Sort components will grip securely.

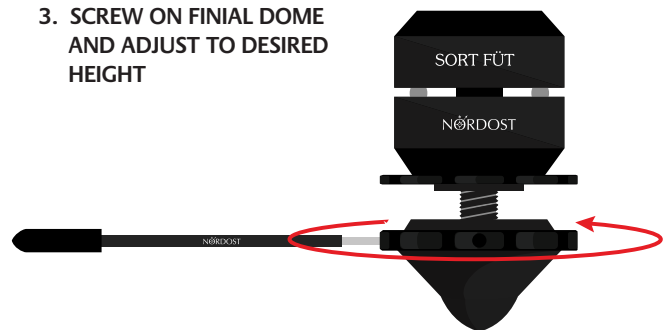
- 1. UNSCREW FINIAL DOME FROM SORT FÜT BODY**



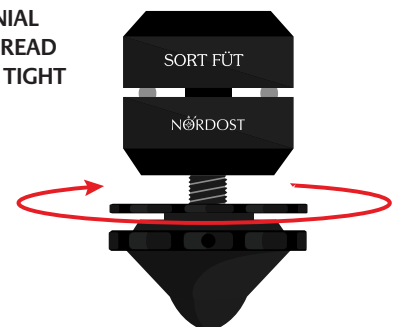
- 2. SCREW ON LOCK WITH BOSS FACING DOWN**



- 3. SCREW ON FINIAL DOME AND ADJUST TO DESIRED HEIGHT**



- 4. WHILE HOLDING FINIAL DOME IN PLACE, THREAD DOWN LOCK UNTIL TIGHT**



To install Sort Locks on Sort Füt units that are already installed:

You can install Sort Locks on Sort Füt units that are already installed by following this simple procedure:

- You will need the help of a friend (or friends) to support the speaker while you install the Sort Locks.
- You will install one Sort Lock at a time.
- Place a block under one side of the speaker, so that the Sort Füt units on that side are lifted very slightly clear of the ground. Books are excellent for this purpose.
- Now tilt the speaker towards the block so that the Sort Füt units on the other side are sufficiently clear of the ground to remove the adjustable feet. Place another block or stack of books to prevent the speaker toppling. Make sure that it is stable and that your helper(s) are fully in control.
- Install the Sort Lock on one Sort Füt and replace the adjustable finial dome, setting it at minimum height.
- Remove the block/books on the side you are working on and gently lower the speaker back into place.
- Remove the books on the other side of the speaker and then wind the raised Sort Füt down until the speaker is stable. Lock the Sort Lock in position.
- Now repeat for the other Sort Füt units and then the other speaker.
- **Do not attempt this procedure if the speaker is too heavy for you to tilt and control comfortably. If in doubt, contact your Nordost dealer for help or advice.**

